



Microsoft
Cloud for Sustainability

**Accelerate your
sustainability journey**

Ana-Maria Barbuta
SMB Lead MS Romania
Sustainability Champ





Agenda

1. Climate and business challenges
2. Our sustainability journey
3. Microsoft Cloud for Sustainability
4. Microsoft Sustainability Manager
5. Next steps

Sustainability challenges and opportunities



**Our future,
our responsibility**



Decision making is layered, and complex

Environmental
impact

Potential
pathways for
improvement

Targeted
investments

Business
value

Sustainability drivers

Regulatory requirements



~50k

Companies in the European Union may have to adhere to detailed sustainability reporting standards in 2024¹

Energy consumption and costs



65%

According to Gartner, 65% of executives are mitigating energy consumption cost increases with sustainability programs²

Investor expectations



73%

Investors state that efforts to improve the environment and society contribute to their investment decisions³

Economic opportunities



\$43T

Strong climate action could deliver trillions to the global economy by 2070⁴

¹ "Why US companies should not ignore Europe's ESG proposals," PWC; ² "2022 Sustainability Survey: Use Sustainability to Drive Value and Mitigate Disruption," Gartner, by Sarah Watt, Kristin Moyer and Lauren Wheatley, 26 September 2022, GARTNER is a registered trademark and service mark of Gartner, Inc. and/or its affiliates in the U.S. and internationally and is used herein with permission. All rights reserved; ³ "15 EYE – OPENING CORPORATE SOCIAL RESPONSIBILITY STATISTICS," Harvard Business School Online; ⁴ "The turning point: A Global Summary," Deloitte

Navigating obstacles

Lack of
global
standards

Slow manual
processes

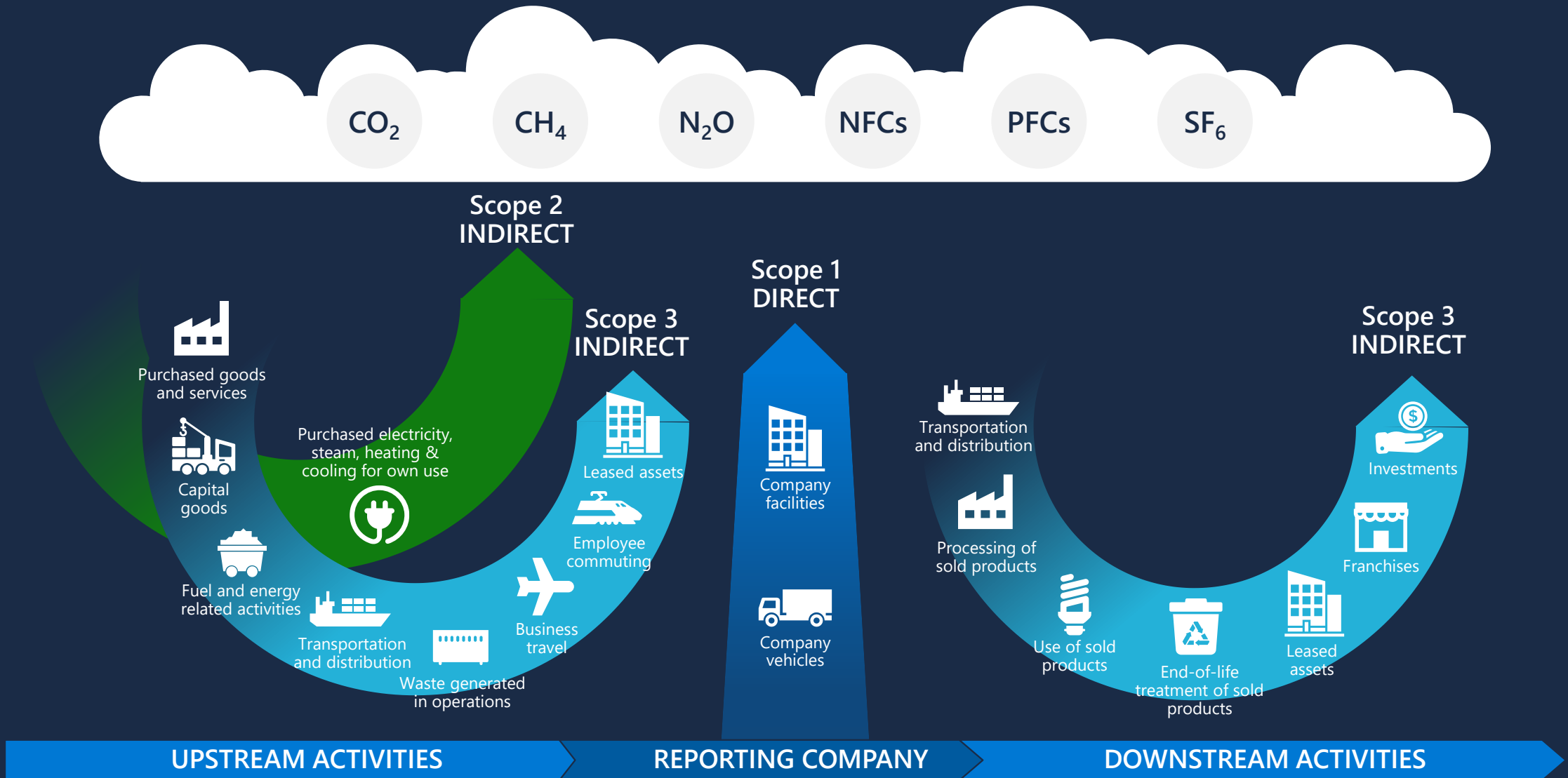
Value chain
transparency

Siloed
data

Capital
investment
tradeoffs



Scopes and emissions across the value chain



Sustainability is a value chain effort




of an average company's resource footprint occurs either upstream or downstream¹

¹ "Value chain and supply chain sustainability," Carbon Trust



Progress depends on a common
foundation for accurate, consistent,
reliable measurement

... and continuous visibility and
data intelligence **to inform and
guide your journey**



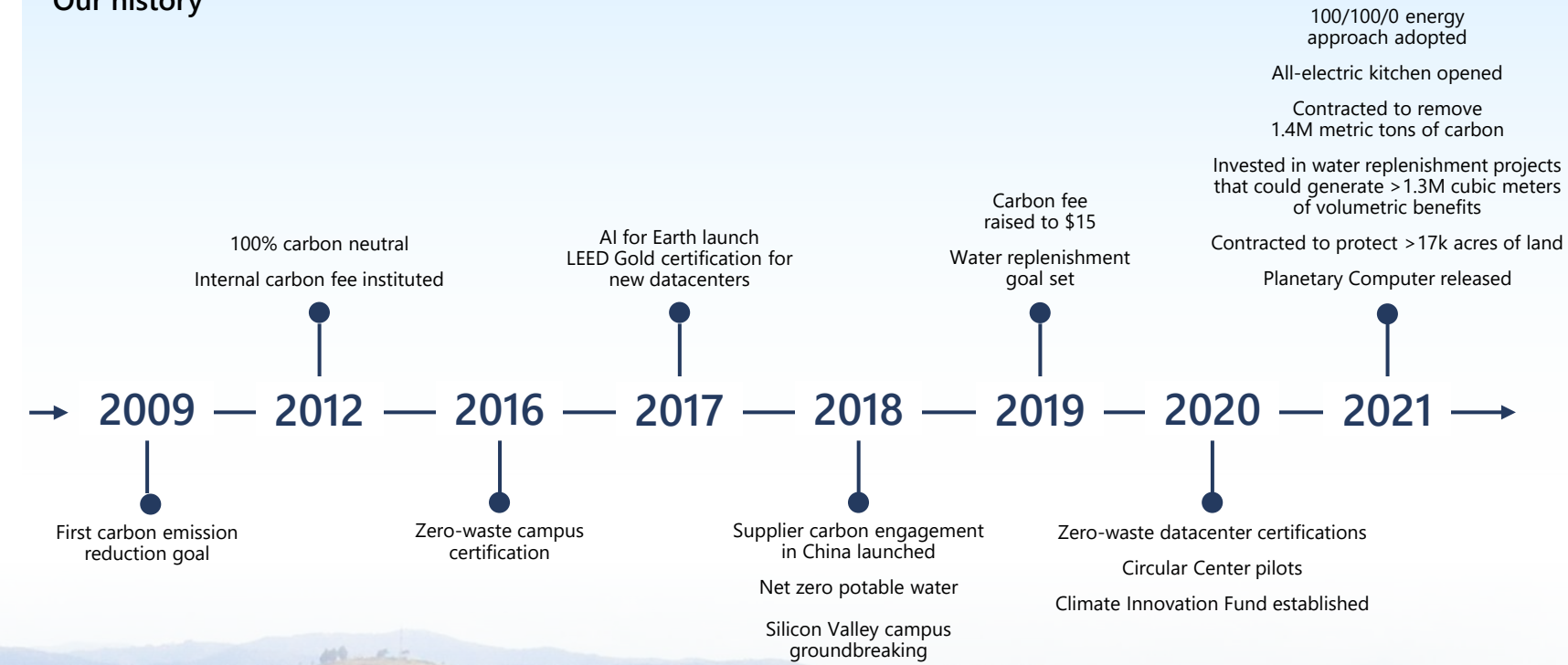
We need a **sustainability data estate** supported by a **network of APIs** that enable activities and interoperability across applications

Microsoft
sustainability
journey

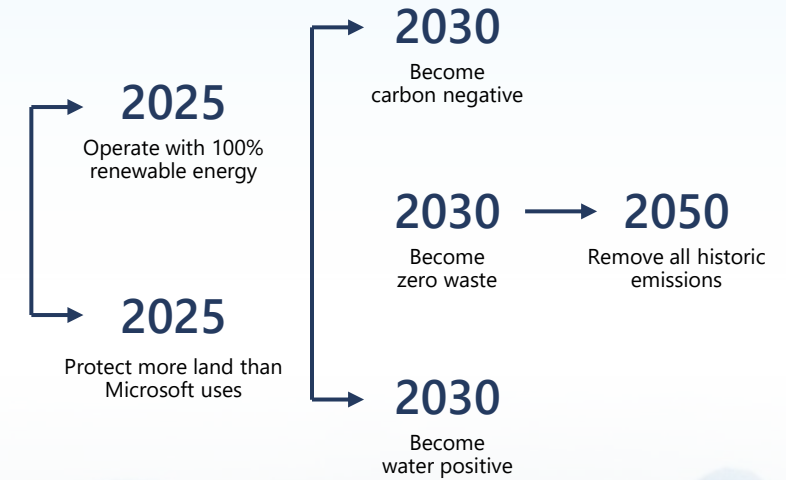


Decades of action

Our history



Our commitments



Tool sets

Solutions

Internal systems

Accelerating progress on a path to net zero

Microsoft's sustainability journey

Advancing the sustainability of our business, from pledges to progress

Sustainability technology solutions

Creating sustainability solutions for operational efficiency and environmental impact

Global sustainability transformation

Supporting the societal infrastructure for a sustainable world

A net-zero carbon economy

Microsoft Cloud for Sustainability



Microsoft Cloud for Sustainability

Reducing your environmental impact to create a more resilient future



Build a sustainable
IT infrastructure



Reduce environmental
impact of operations



Create sustainable
value chains



Unify data intelligence



Unify data intelligence



Data integration and calculation

Streamline data ingestion, integration, and calculations

Reporting, disclosure, and automated insights

Analyze and report environmental impact and sustainability progress

Gain the visibility required to effectively drive sustainability reporting, sustainability efforts, and business transformation



Build a sustainable IT infrastructure

Identify opportunities to replace tools, systems, or activities with more efficient options and add business value

Workload migration to the cloud

Create carbon and energy efficiencies in the cloud

Responsible devices

Adopt technologies that are sustainable by design



Reduce environmental impact of operations

Minimize the environmental footprint of your operational systems and processes

Smart facilities

Reduce the environmental impact of buildings, spaces, and equipment

Energy management

Create energy efficiencies and transition to clean energy

Collaboration and planning

Enable seamless collaboration about goals and progress



Create sustainable value chains



Facilitate greater transparency and accountability through your value chain, from raw materials to product creation to distribution

Value chain visibility

Increase value chain transparency

Sustainability is good for business and good for the planet

Drive the operational and cost efficiencies you need to accelerate your sustainability journey and achieve your goals

Unify data intelligence

Get more from your data

Achieve efficiencies faster

Build a sustainable IT infrastructure

Migrate and save

Reduce environmental impact of operations

Reduce energy consumption and costs

Microsoft Cloud for Sustainability

Partner sustainability solutions built on the Microsoft Cloud

Microsoft
Sustainability
Manager

Emissions Impact
Dashboard
applications

Environmental
Credit Service

... more solutions
coming soon!


Microsoft Cloud for Sustainability data model

Power Platform

Dataverse

Data Lake

Microsoft Azure



Enable a shared data language with the
Microsoft Cloud for Sustainability data model

Publicly available for use across
your enterprise and value chain

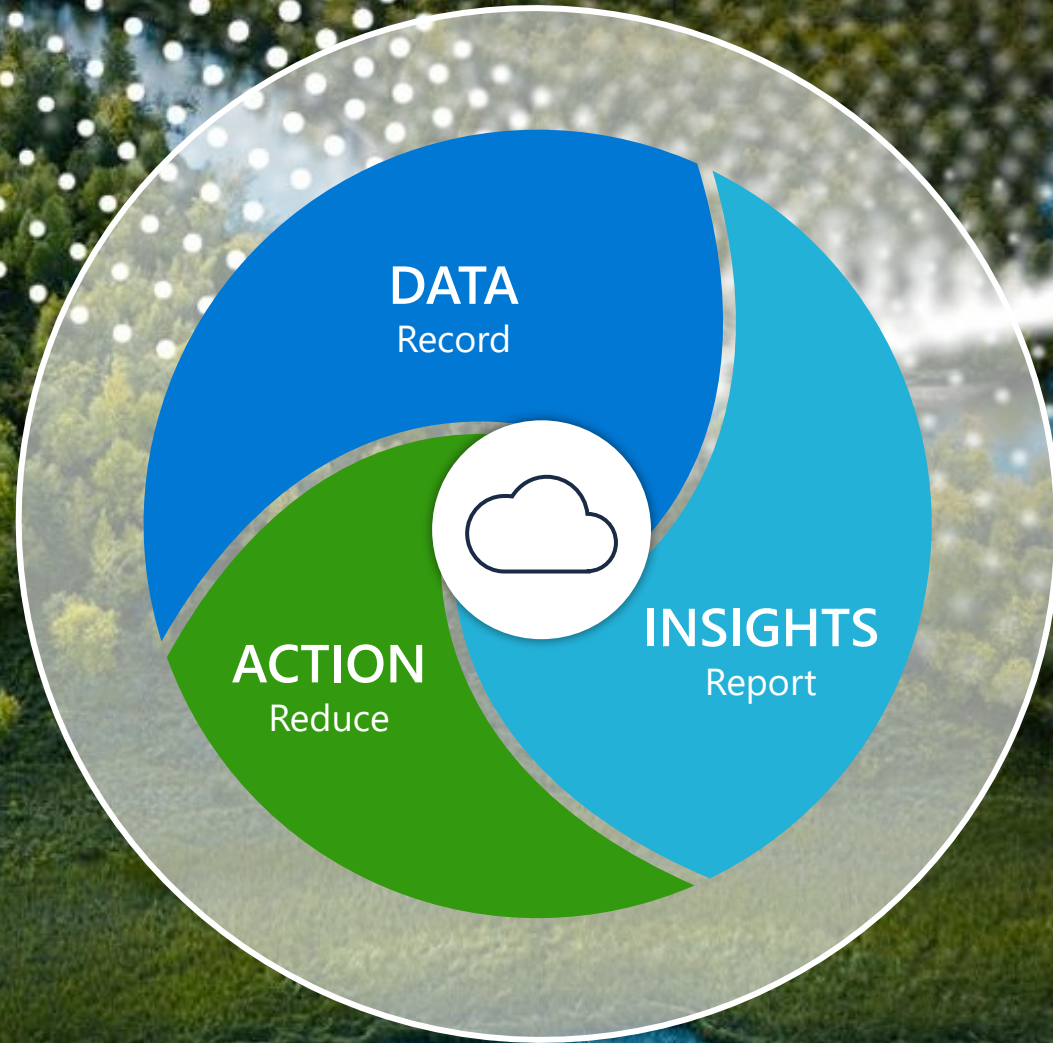
Centralizes data from all
sources, internal and external

Microsoft Sustainability Manager



Microsoft Sustainability Manager

Unify data intelligence to help you **monitor and manage** your sustainability performance





Record data



Automate data collection



Break down data silos with Microsoft Cloud for Sustainability data model



Calculate emissions across scopes



Generate more accurate results



Report insights



Visualize
your impact



Track your performance
against goals



Gain actionable insights
to maximize progress



Streamline
reporting



Reduce your footprint



Set and track
sustainability targets



Collaborate
seamlessly

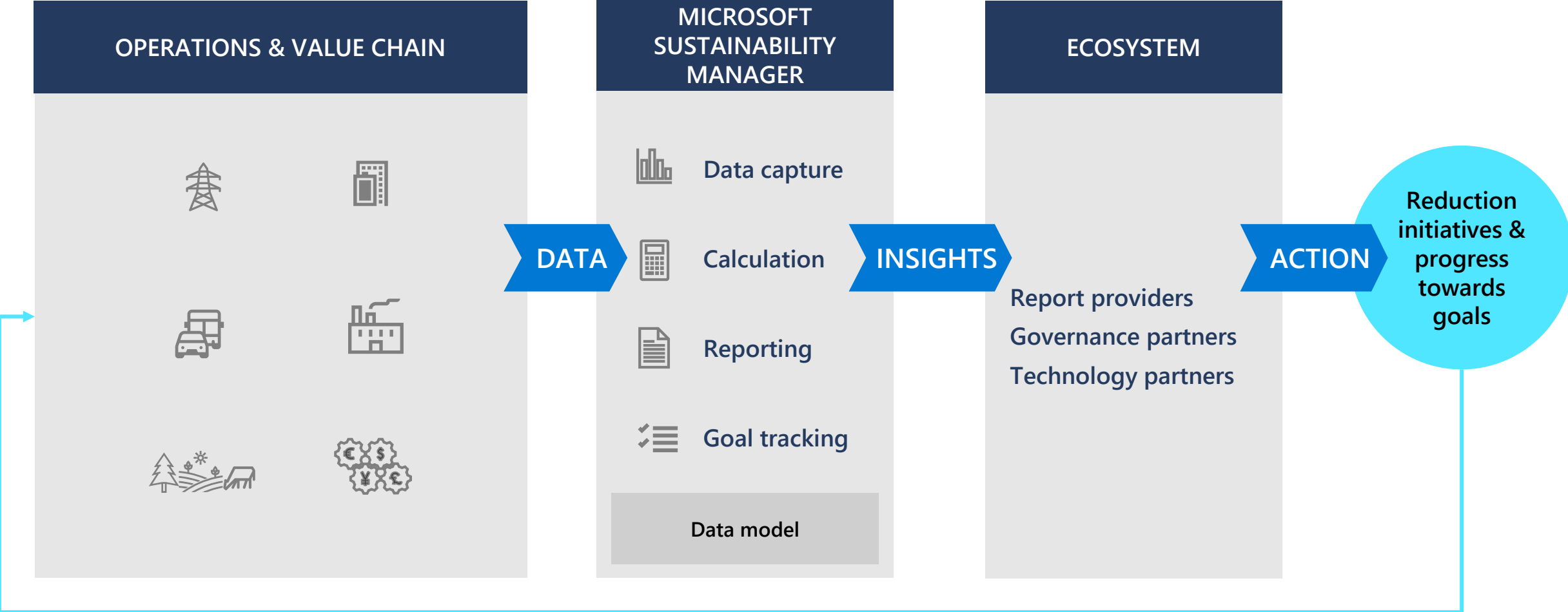


Use analytics to improve
reduction activities

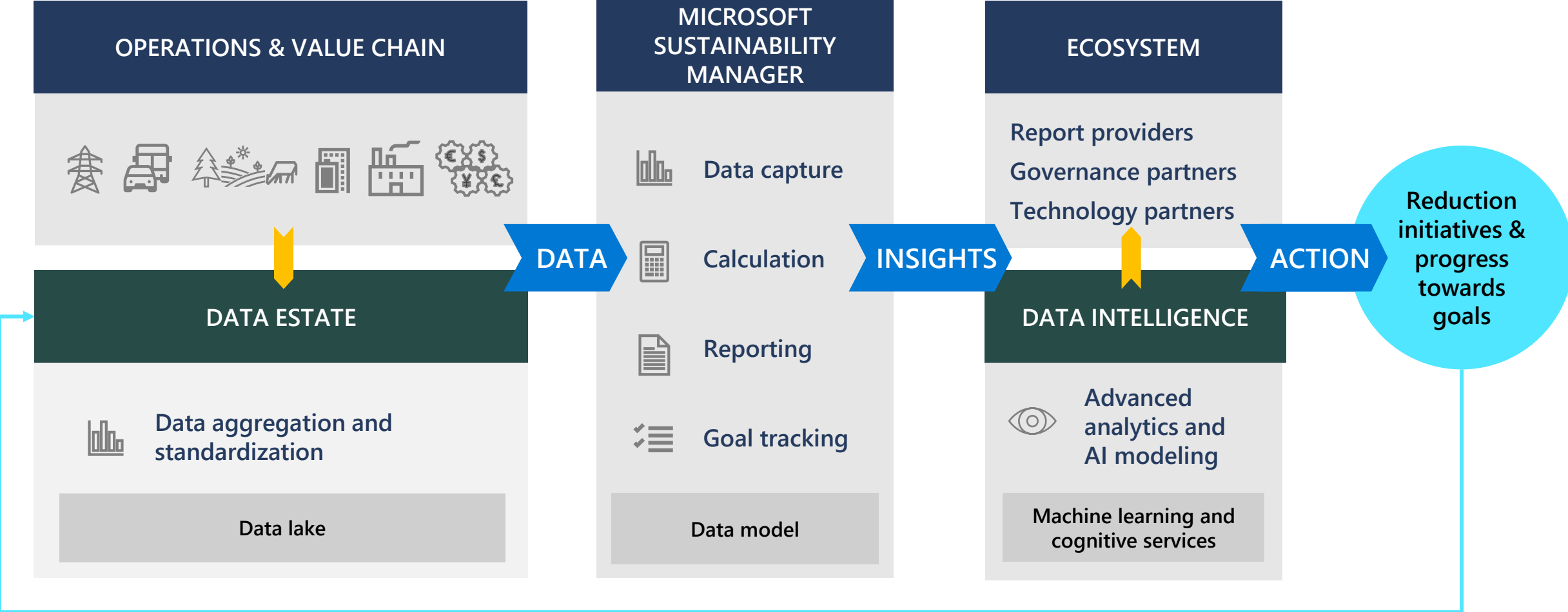


Reimagine fundamentals
and drive lasting change

Data + AI solutions empower organizations to turn better data insights into meaningful action



Data + AI solutions empower organizations to turn better data insights into meaningful action



Microsoft Sustainability Manager in action



Flexible data ingestion methods

Manual



File based



New connection



Prebuilt connectors



Start preparing your data

Establish initial
organizational
sustainability
objectives

Begin outlining
reporting KPIs
and mapping
data sources to
reporting needs

Define your
organization's
profile and
structure

Prepare your
reference data,
calculation
formulas and
models



Azure sustainability guidance

New technical guidance to help customers and partners achieve sustainability goals using Azure

Use this guidance to:

- Plan your path forward
- Improve your sustainability posture
- Create new business value while reducing your operational footprint

Get started with Azure sustainability guidance for the Well-Architected Framework (WAF) today at:

aka.ms/WAF/sustainability

Creating momentum



The right intelligence informs credible decision-making

ESG
commitments

Growth
opportunities

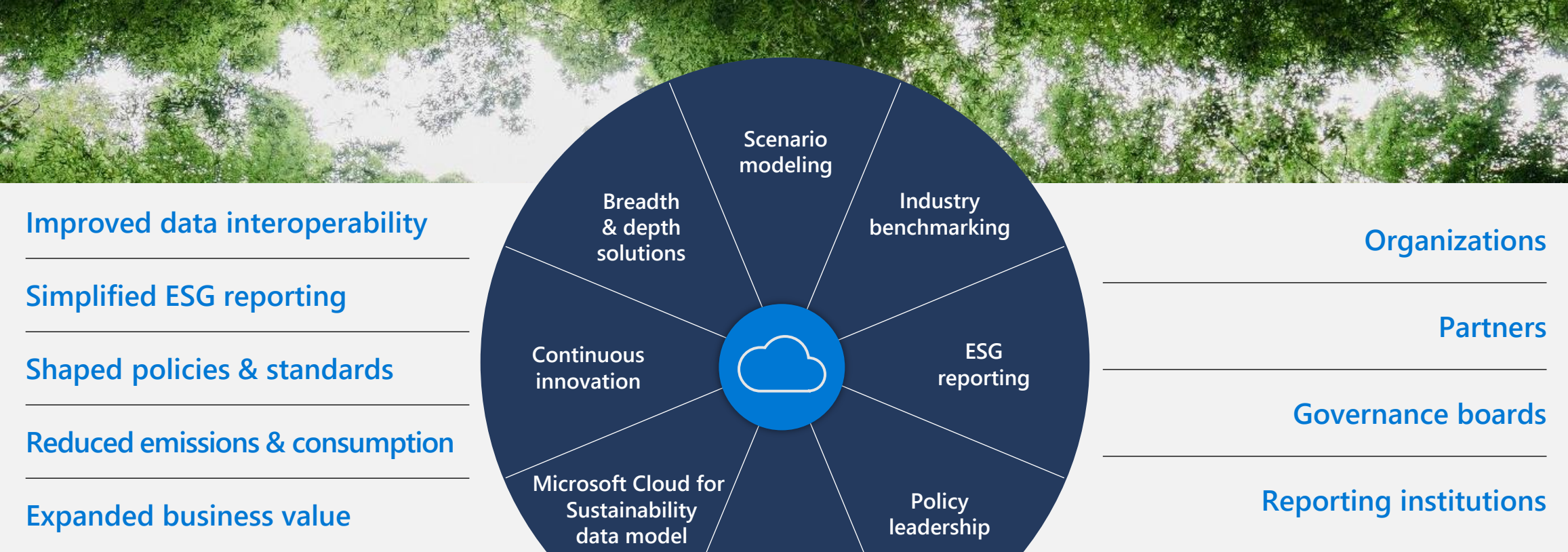
Operational
excellence

Shareholder
value



Our vision is to enable transformation for a sustainable future

through technology and by building communities to connect data, share insights, and take collective action



We are supported by a growing ecosystem of Microsoft Cloud for Sustainability partners



For partner solution details, visit aka.ms/sus-partners



Forging ahead,
driving action



Where are you in your sustainability journey?



Get started

Learn more and sign up for free trials and Microsoft Cloud for Sustainability updates

aka.ms/microsoftcloudforsustainability

Find digital technologies and training

aka.ms/solutioncenter

Join our Insider Community

aka.ms/SustainabilityInsider



Accelerate your sustainability journey

[Microsoft.com/sustainability](https://microsoft.com/sustainability)



Appendix



Microsoft Sustainability Manager pricing

Microsoft Sustainability Manager

USD4,000 per tenant, per month ^{1,2}



Microsoft Sustainability Manager solution



Dedicated customer support ³



Microsoft Cloud for Sustainability data model

³ **Technical support:** Get a response to your most critical cases within one hour and unlimited access to technical resources

Key capabilities at general availability (GA), June 1, 2022

Record

- Increasingly automated data collection with prebuilt connectors
- Centralized emissions data from disparate sources
- Prebuilt methodologies to calculate GHG emissions across Scopes 1, 2, and 3 ⁴

Report

- Data analytics, visualization, and dashboards
- Actionable insights and performance tracking
- Configurable preparatory reports

Reduce

- Scorecards and goal setting
- Seamless collaboration with Microsoft Teams ⁵
- Integrated sustainability insights



Localization and regional availability as of November 30, 2022

Languages: Basque | Bulgarian | Croatian | Czech | Danish | Dutch | English | Estonian | Finnish | French | German | Greek | Hungarian | Italian | Japanese | Latvian | Lithuanian | Norwegian | Polish | Portuguese (Brazil) | Portuguese (Portugal) | Romanian | Russian | Serbian (Cyrillic, Serbia) | Serbian (Latin, Serbia) | Slovak | Slovenian | Spanish | Swedish | Traditional Chinese | Turkish | Ukrainian

Deployable from United States, United Kingdom, Europe, and APAC

¹ Above pricing includes capabilities launched for GA, additional post GA features may be subject to additional charge.

² License includes Dataverse entitlement capped at : Database (10GB/month), File (20GB/month); Log (2GB/month). Additional usage will require purchase of Dataverse capacity add-on.

⁴ Microsoft Sustainability Manager has the ability to store and report on emissions across Scopes 1, 2, and 3. The solution includes prebuilt calculation methodologies for Scopes 1 and 2 and several categories of Scope 3. Prebuilt calculation methodologies will be added in future updates for remaining Scope 3 categories. For more information, please visit [Legal information page](#).

⁵ Teams collaboration and chat is currently a preview feature. Collaboration capability requires Microsoft Teams license.

Microsoft Cloud for Sustainability and our partners accelerate sustainability progress and business growth

Reduce your environmental impact to create a more resilient future



Build a sustainable IT infrastructure

Workload migration to the cloud

Responsible devices



Reduce environmental impact of operations

Energy management

Smart facilities

Collaboration and planning



Create sustainable value chains

Value chain visibility

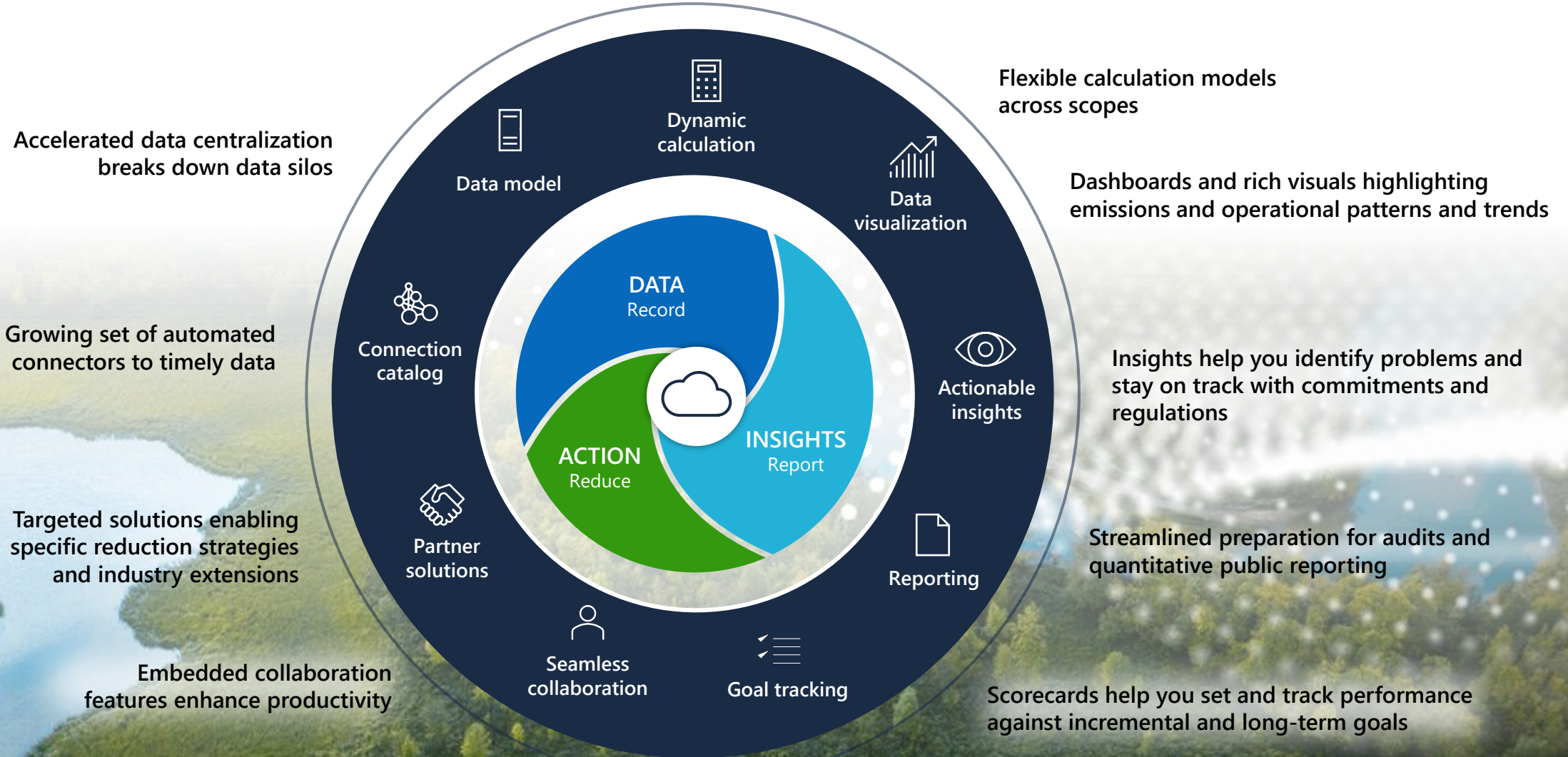


Unify data intelligence

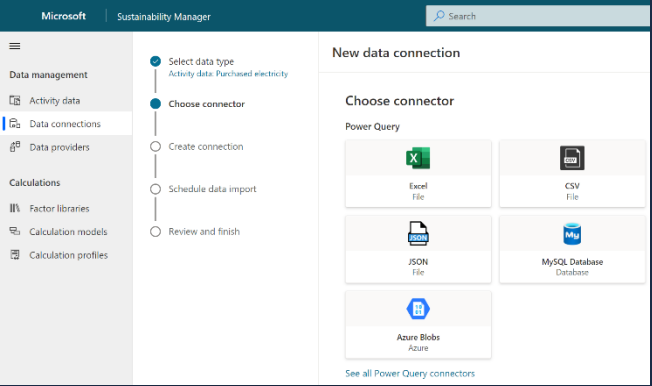
Data integration and calculation

Reporting, disclosure, and automated insights

Microsoft Sustainability Manager unifies data intelligence

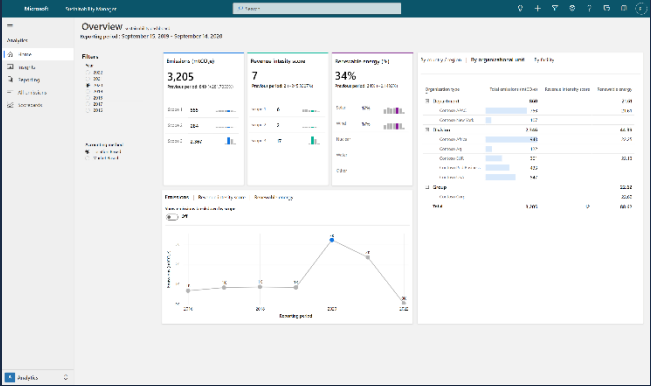


One platform for integrating and accelerating your journey



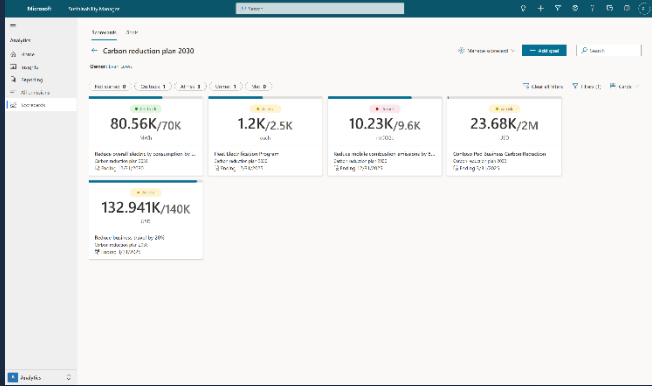
Connect your **data** and calculate your impact

RECORD



View data analysis and **insights**

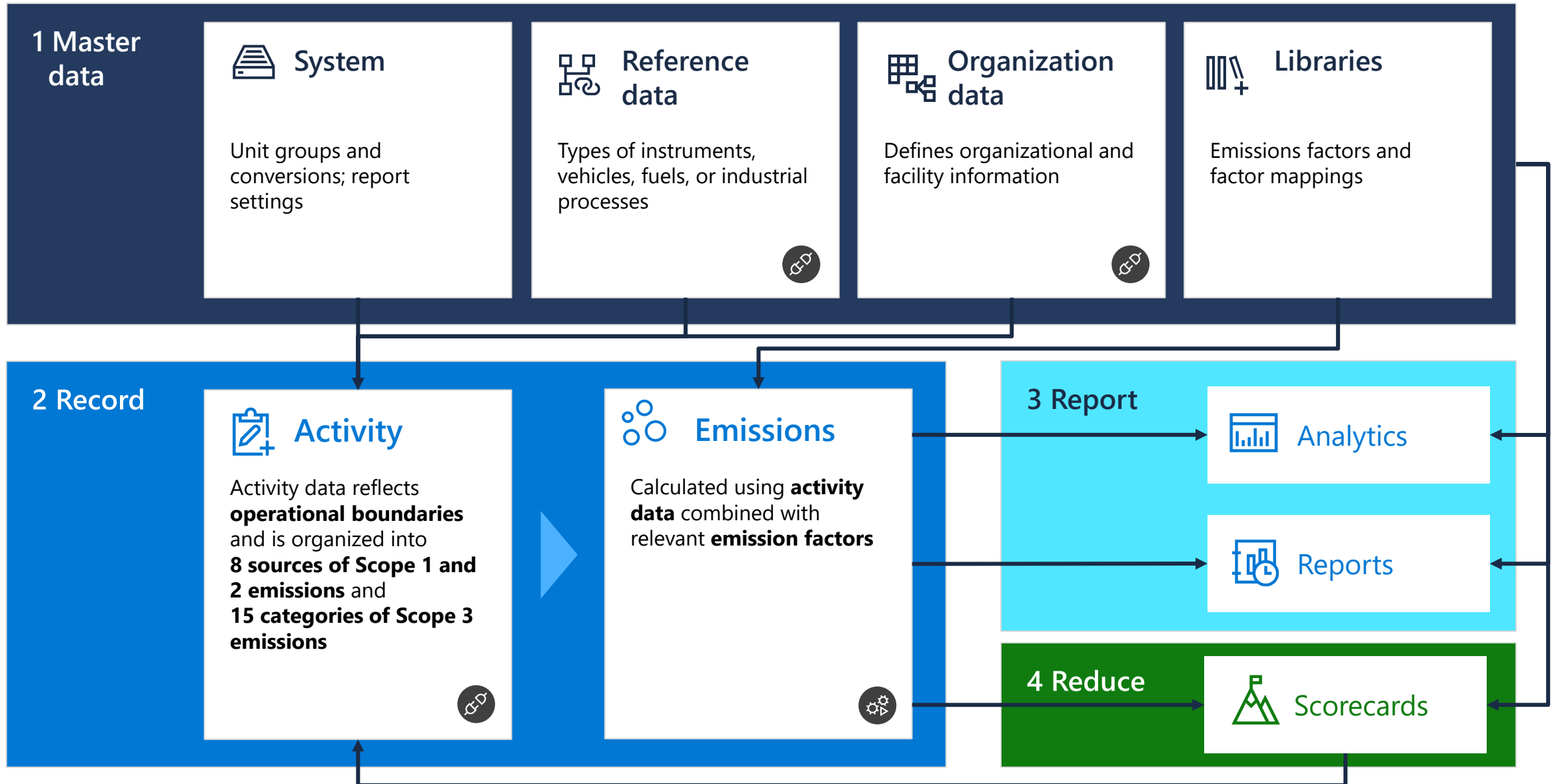
REPORT



Take **action** to accelerate your sustainability journey

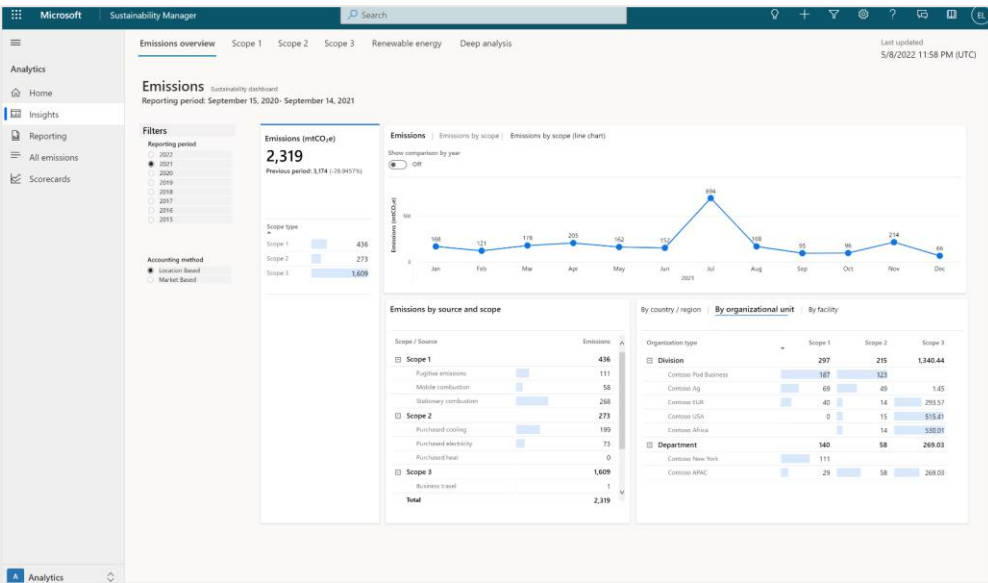
REDUCE

Processes and data flow



Customer One: Microsoft

Operationalizing our sustainability reporting on Microsoft Sustainability Manager



In the 10+ years of sustainability work at Microsoft, we have learned the importance of setting bold ambitions, driving a culture of success, and measuring progress in a transparent, data driven way.

From our internal carbon tax to our sustainability data infrastructure, we are pioneering new data collection, calculation, and reporting across our enterprise and into our supply chain. Now, these learnings, solutions, and experiences are driving capabilities within Microsoft Sustainability Manager.



Data governance

Our need for data stewardship, provenance, governance, and accountability is informing our solution roadmap

Data models

Common data models across carbon are tested against Microsoft's reporting data to ensure quality and accuracy

Reliable data foundation

We use Data Lakes and Synapse to collect, cleanse, and connect data across Scope 1 and 2, with plans to include Scope 3

The Planetary Computer

An open, cross-domain **geospatial data platform** transforming the way we **measure, monitor, model, and manage** Earth's natural systems



Datasets
together



Standardized
access



Simplified
analysis



More insights,
faster



Interoperable
and open



Scalable

Carbon Call



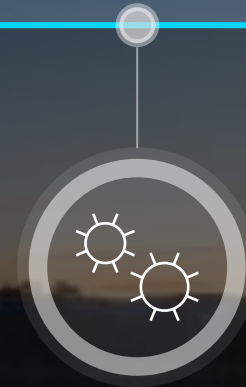
Consistent measurement & accounting

Advance the development of more universal accounting methodological standards for companies, including links to national transparency reporting



Robust data & science

Enable the expansion of access to reliable GHG emissions and removal data



Interoperable accounting infrastructure

Strengthen the interoperability of digital carbon accounting infrastructures

Sustainability definitions

Greenhouse Gas Emissions (GHG) measurement

Scope

1



Direct emissions created by your activities, like exhaust from company vehicles or diesel generators

Scope

2



Indirect emissions from the production of electricity or heat you use to power buildings or processes

Scope

3



Indirect value chain emissions from all other activities in which you're engaged, including all parts of your supply chain, from materials in buildings, business travel, and product lifecycle to the electricity your customers consume

Carbon targets

Carbon neutral: A company becomes carbon neutral by reducing their emissions and/or paying others to not emit an equivalent to their remaining emissions.

Carbon net zero: An organization is considered net zero carbon when it removes as much carbon as it emits.

Carbon negative: A company is carbon negative when it removes more carbon than it emits each year.

For more information, visit ghgprotocol.org or watch the Microsoft [carbon math video](#)